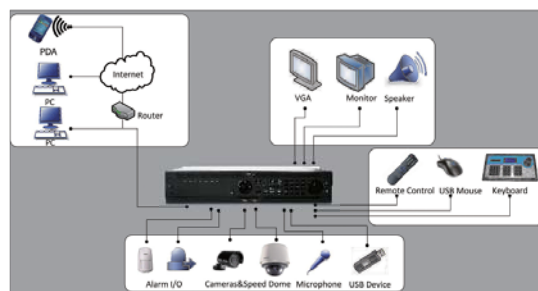


DS-9104/9108/9116HFI-SH Standalone DVR



Key Features

- H.264 video compression
- 4 independent local video output (HDMI, VGA, MAIN and AUX)
- HDMI Output at 1920×1080 resolution
- Advanced motion detection
- Easy back-up to USB and CD/DVD-RW
- Support up to 8 SATA hard disk drives
- Support dual stream



Specifications

		DS-9104HFI-SH	DS-9108HFI-SH	DS-9116HFI-SH
Video/Audio input	Video compression	H.264		
	Video input	4-ch, BNC (1.0 Vp-p, 75 Ω), PAL/NTSC adaptive	8-ch, BNC (1.0 Vp-p, 75 Ω), PAL/NTSC adaptive	16-ch, BNC (1.0 Vp-p, 75 Ω), PAL/NTSC adaptive
	Audio compression	OggVorbis		
	Audio input	4-ch, BNC (2.0 Vp-p, 1 kΩ)	8-ch, BNC (2.0 Vp-p, 1 kΩ)	16-ch, BNC (2.0 Vp-p, 1 kΩ)
	Voice talk input	2-ch, BNC (2.0 Vp-p, 1 kΩ)	2-ch, BNC (2.0 Vp-p, 1 kΩ)	2-ch, BNC (2.0 Vp-p, 1 kΩ)
Video/Audio output	Preview resolution	PAL: 704 × 576 NTSC: 704 × 480		
	HDMI Output	1-ch, resolution: 1920 × 1080/60Hz, 1280 × 1024/60Hz, 1024 × 768/60Hz		
	VGA output	1, resolution: 1024 × 768/60Hz, 1024 × 768/70Hz, 1280 × 1024/60Hz		
	Recording resolution	4CIF / DCIF / 2CIF / CIF / QCIF		
	Video output	2-ch, BNC (1.0 Vp-p, 75Ω)		
	Frame rate	PAL: 25 fps, NTSC: 30 fps		
	Video bit rate	32 Kbps ~ 2048 Kbps, or user-defined (Max. 6144Kbps)		
	Audio output	2-ch, BNC (linear electrical level, 600Ω)		
	Audio bit rate	16 kbps		
	Synchronous playback	4-ch	8-ch	16-ch
Hard disk driver	Interface type	8 SATA interface		
	Capacity	Each interface supports more than 2TB capacity		
External interface	Network interface	1, RJ45 10M/100M/1000M adaptive Ethernet interface		
	Serial interface	1 RS-232 interface (for parameters configuration, maintenance, transparent channel); 1 RS-485 interface (for PTZ control); 1 RS-485 keyboard interface (for special keyboard control)		
	USB interface	3, USB2.0		
	Alarm input	16-ch		
General	Alarm output	4-ch		
	Power supply	100 ~ 240 V AC, 6.3 A, 50 ~ 60 Hz		
	Consumption	≤ 70 W (without hard disk or DVD-R/W)		
	Working temperature	-10 °C ~ +55 °C (14 °F ~ 131 °F)		
	Working humidity	10% ~ 90%		
	Chassis	19" standard 2U chassis		
	Dimension	450(D) × 450(W) × 95 mm(H) (17.72"(D) × 17.72"(W) × 3.74"(H))		
Weight (without HDD)	≤ 8000 g (17.64 lbs)			